

## Salvia Red Hot Sally II

(*Salvia splendens*)

Annuals Culture (revised 01/23/21)

**Plug crop time:** 4 to 5 weeks

**Transplant to finish:** 4 to 5 weeks

**Available in North America only.**

- Stands out all season in landscapes, gardens, planters and mixed containers.
- Flower spikes are short and full for a dramatic show of colour.
- High seed quality, superior uniformity and excellent heat tolerance.

### General Information

Exposure	Bloom Season	Height	Spread	Spacing
Sun	Late Spring, Summer, Late Summer	10-12 in. (25-30 cm)	8 in. (20 cm)	8-10 in. (20-25 cm)

### Germination

Seed Form	Recommended Plug Size	Seeds/Cell	Plug Crop Weeks	Days from 50% to maximum germination	Initial Media pH/EC (1:2)	Cover Seed
RAW	288	1	4-5	4-6	5.5-5.8 pH 0.75 mmhos/cm	Yes

### Plug Production

	Stage 1	Stage 2	Stage 3	Stage 4
<b>Moisture</b>	Level 4	Level 3-4	Level 2-4	Level 2-3
<b>Temperature</b>	70-75°F (21-24°C)	72-75°F (22-24°C)	68-72°F (20-22°C)	62-65°F (17-18°C)
<b>Light</b>	Optional	1,500-2,000 f.c. (16,100-21,500 Lux)	3,000 f.c. (32,300 Lux)	3,000 f.c. (32,300 Lux)
<b>Fertiliser</b>		Less than 100 ppm N (Less than 0.7 EC)	100 to 175 ppm N (0.7 to 1.2 EC)	100 to 175 ppm N (0.7 to 1.2 EC)

### Propagation Key Tips

Salvia is very sensitive to high salt during early plug stages.

### Growing on to Finish

Growing on Temperature	Target Media pH/EC (1:2)	Fertiliser	Daylength
(day) 68-74°F (20-23°C) (night) 64-68°F (18-20°C)	5.5-5.8 pH 1.2-1.5 mmhos/cm	175 to 225 ppm N (1.2 to 1.5 EC)	Facultative Long Day

### Crop Scheduling

Container Size	Plugs/Pot	Crop Time	Season	PGR
Cell Pack	1 (ppp)	4-5 (weeks)	Spring	-
4"/4.5"/Quart/10 cm	1 (ppp)	4-5 (weeks)	Spring	-

### Finishing Key Tips

Salvia is very sensitive to high salt during early plug stages.

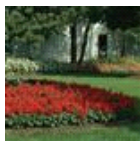
NOTE: Growers should use the information presented here as guidelines only. PanAmerican Seed recommends that growers conduct a trial of products under their own conditions. Crop times will vary depending on the climate, location, time of year, and greenhouse environmental conditions. It is the responsibility of the grower to confirm the treatment is available in their region as well as read and follow all the current label directions relating to the products. Nothing herein shall be deemed a warranty or guaranty by PanAmerican Seed of any products listed herein. PanAmerican Seed's terms and conditions of sale shall apply to all products listed herein.

## Variety Pictures

---



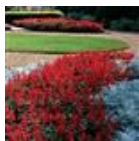
Red Hot Sally II



Red Hot Sally II



Red Hot Sally II



Red Hot Sally II



PanAmerican Seed Co.  
622 Town Road, West Chicago, Illinois, USA, 60185  
+1 800-231-7065 [PanAmSeed.com](http://PanAmSeed.com)

™ denotes a trademark of and ® denotes a registered trademark of Ball Horticultural Company in the US. It may also be registered in other countries.  
©2024 Ball Horticultural Company